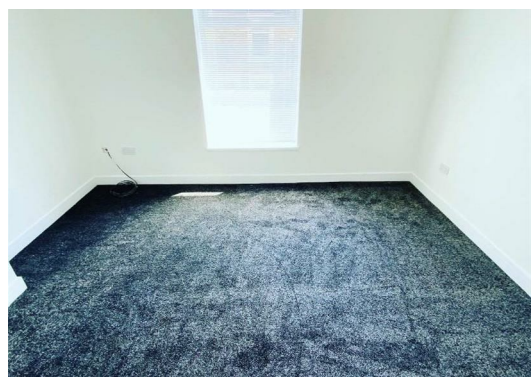




Park Street, BB4 5TF £800 PCM

This well-presented two-bedroom mid-terrace is ideally located just a five-minute walk from Haslingden town centre and offers a spacious front lounge, rear dining room, modern fitted kitchen, two double bedrooms and a three-piece bathroom with shower over bath. Benefiting from gas central heating, uPVC double glazing, neutral décor and flooring throughout, the property also provides on-street parking, a small front area and an enclosed rear yard—making it an ideal home for a small family or two working professionals.



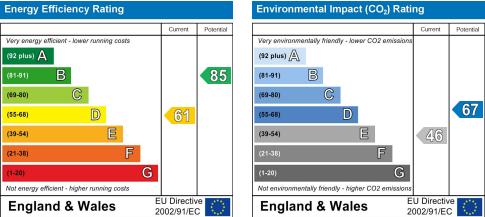
Disclaimer:

These particulars, whilst believed to be accurate are set out as a general guideline and do not constitute any part of an offer or contract. Intending Tenants should not rely on them as statements of representation of fact, but must satisfy themselves by inspection or otherwise as to their accuracy. Please note that we have not tested any apparatus, equipment, fixtures, fittings or services including gas central heating and so cannot verify they are in working order. Although we try to ensure accuracy, if measurements are used in this listing, they may be approximate. Therefore if intending Tenants need accurate measurements to order carpeting or to ensure existing furniture will fit, they should take such measurements themselves. Photographs are reproduced general information and it must not be inferred that any item is included for let with the property. Please contact 01706 823 131 for further details.



Viewing:

Viewing strictly by appointment through Lifestyle Sales and Lettings.



Head Office: 121 Whalley Road, Ramsbottom, Lancashire, BL0 0DG

Telephone: 01706823131 **Email:** enquiries@lifestylesalesandlettings.co.uk **Website:** www.lifestylesalesandlettings.co.uk